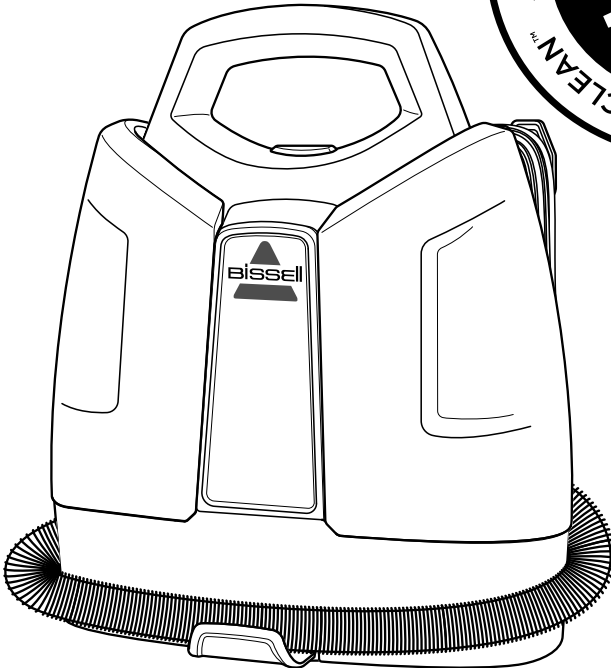


SPOTCLEAN[®] LITTLE GREEN[®]

USER GUIDE
3698L



IMPORTANT SAFETY INSTRUCTIONS

READ ALL INSTRUCTIONS BEFORE USING YOUR APPLIANCE.

Unplug from outlet when not in use and before conducting maintenance. When using an electrical appliance, basic precautions should be observed, including the following:

WARNING

TO REDUCE THE RISK OF FIRE, ELECTRIC SHOCK, OR INJURY:

- » This appliance can be used by children aged from 8 years and above and persons with reduced physical, sensory or mental capabilities or lack of experience and knowledge if they have been given supervision or instruction concerning use of the appliance in a safe way and understand the hazards involved. Cleaning and user maintenance shall not be made by children without supervision.
- » Children should be supervised to ensure that they do not play with the appliance.
- » Keep hair, loose clothing, fingers, and all parts of body away from openings and moving parts of the appliance and its accessories.
- » Unplug from electrical socket when not in use, before cleaning, maintaining or servicing the appliance, and if your appliance has an accessory tool with a moving brush, before connecting or disconnecting the tool.
- » If the supply cable is damaged, it must be replaced by the manufacturer, its service agent, or similarly qualified person in order to avoid a hazard.
- » Do not run appliance over cable.
- » Do not leave appliance when plugged in.
- » Do not use with damaged cable or plug.
- » Do not pull or carry by cable, use cable as a handle, close door on cable, or pull cable around sharp edges or corners.
- » Keep cable away from heated surfaces.
- » To unplug, grasp the plug, not the cable.
- » Do not handle plug or appliance with wet hands.
- » Turn off all controls before unplugging.
- » Plastic film can be dangerous. To avoid danger of suffocation, keep away from children.
- » Use only as described in this user guide.
- » Use only manufacturer's recommended attachments.
- » Do not immerse in water or liquid.
- » If appliance is not working as it should, has been dropped, damaged, left outdoors, or dropped into water; do not attempt to operate it and have it repaired at an authorized service center.
- » Do not put any object into openings.
- » Do not use with any opening blocked; keep free of dust, lint, hair, and anything that may reduce air flow.
- » Use extra care when cleaning on stairs.
- » Do not use to pick up flammable or combustible liquids, such as petroleum, or use in areas where they may be present.
- » Do not pick up toxic material (chlorine bleach, ammonia, drain cleaner, etc.)
- » Do not use appliance in an enclosed space filled with vapours given off by oil base paint, paint thinner, some mothproofing substances, flammable dust, or other explosive or toxic vapours.
- » Do not pick up hard or sharp objects such as glass, nails, screws, coins, etc.
- » Keep appliance on a level surface.
- » Do not pick up anything that is burning or smoking, such as cigarettes, matches, or hot ashes.
- » If your appliance is fitted with a nonrewireable BS 1363 plug it must not be used unless a 13 amp (ASTA approved to BS 1362) fuse is fitted in the carrier contained in the plug. Spares may be obtained from your BISSELL supplier. If for any reason the plug is cut off, it must be disposed of, as it is an electric shock hazard should it be inserted into a 13 amp socket.
- » Do not expose to rain. Store indoors.
- » Always connect to a properly earthed electrical socket. Do not modify earthed plug.
- » Liquid must not be directed towards equipment containing electrical components.
- » Use only on surfaces moistened by the cleaning process. Use only BISSELL cleaning products intended for use with this machine.
- » Use only the type and amount of liquids specified under the operations section of this guide.
- » Always install float before any wet pick-up operation.

SAVE THESE INSTRUCTIONS

FOR OPERATION ON A 220-240 VOLT A.C. 50-60 HZ POWER SUPPLY ONLY.

This model is for household use only.

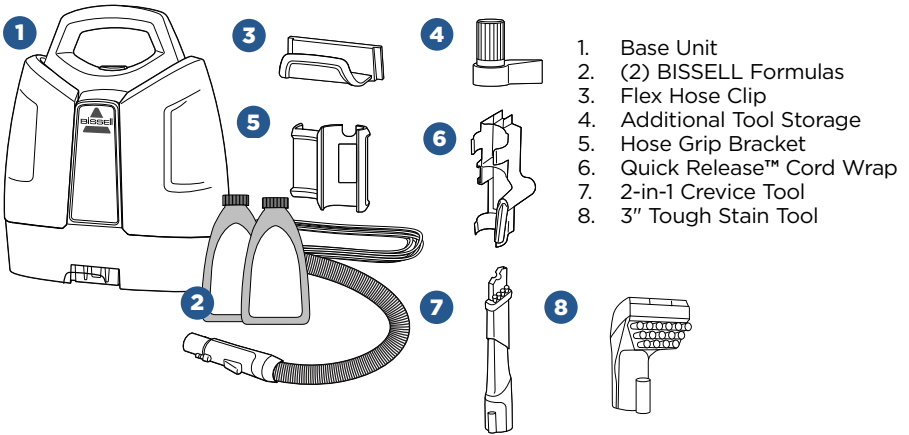
Thanks for buying a BISSELL portable carpet cleaner!

We love to clean and we're excited to share one of our innovative products with you. We want to make sure your portable carpet cleaner works as well in two years as it does today, so this guide has tips on using (pages 6-10), maintaining (pages 11-13), and if there is a problem, troubleshooting (page 14).

In just a few simple assembly steps, you'll be ready to spot clean. Flip to page 6 and let's get started!



What's In The Box?



NOTE: Standard accessories may vary by model. To identify what should be included with your purchase, please refer to the "Carton Contents" list located on the carton top flap.

Safety Instructions 2
Product View 4
Assembly 5
Operations 6-7

Maintenance & Care 8-10
Troubleshooting 11
Guarantee 12
Consumer Care 12

Cleaning Formula

WARNING

To reduce the risk of fire and electric shock due to internal component damage, use only BISSELL cleaning formula intended for use with this machine.



BISSELL Oxygen Boost
Formula Enhancer



BISSELL Spot & Stain
Formula



BISSELL Pet Stain &
Odour Formula

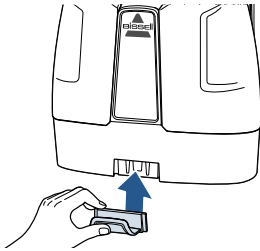
NOTICE: Use of cleaning formulas which contain lemon or pine oil may damage this appliance and void the guarantee. Chemical spot cleaners or solvent-based soil removers also should not be used. These products may react with the plastic materials used in your cleaner, causing cracking or pitting.

Assembly

WARNING

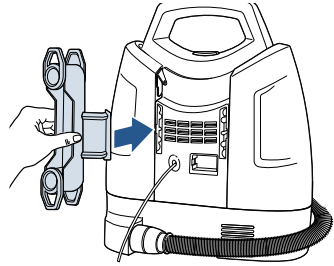
Do not plug in your cleaner until you are familiar with all instructions and operating procedures.

1



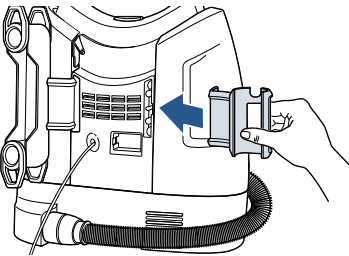
Slide the flex hose clip into opening on the front of the machine. You will hear a “snap” when it is locked into place.

2



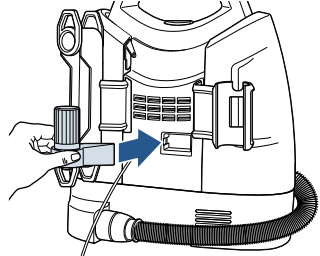
Attach cord wrap by snapping it into place on the collection tank side of the machine.

3



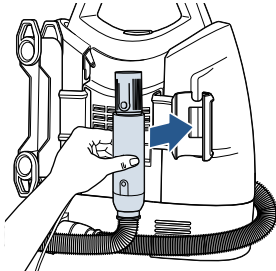
Snap the hose grip bracket into the back of the machine on the clean tank side.

4



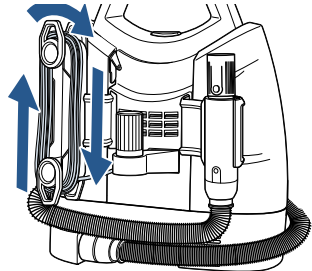
Snap the second tool storage (select models) into the back between the cord wrap and hose grip bracket.

5



Then wrap the flex hose around the unit and snap hose grip into bracket.

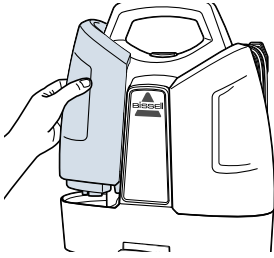
6



Wrap the power cord around the cord wrap.

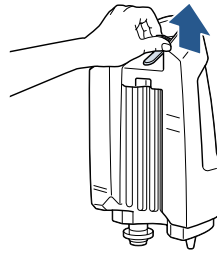
Filling the Solution Tank

1



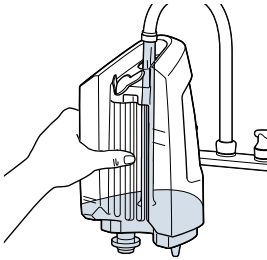
Remove the tank by lifting it straight up and away from the unit.

2



Pull black tab to reveal tank opening. The plug rotates out of the way for easy filling.

3

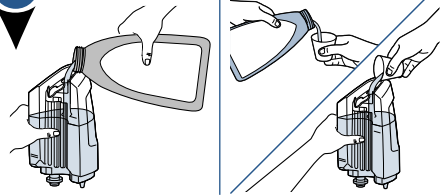


Add water to the indicated fill line on the solution tank.

4

FORMULA

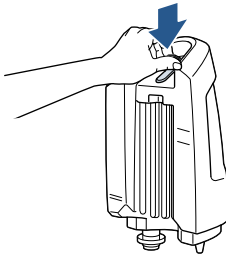
BOOST



Add formula to the indicated fill line on the solution tank. Add 29.5 mL of Oxygen Boost, if desired.

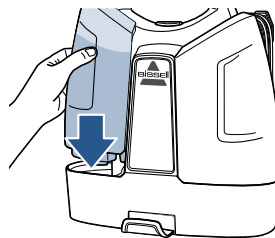
NOTE: Follow the fill lines on your clean tank to add the correct amount of hot tap water (140 degrees F)/ 60 degrees C) MAX) and portable machine formula. Note: There are different directions on the tank for small and large messes.
DO NOT BOIL OR MICROWAVE WATER.

5



Replace the plug by rotating into place and pressing gently onto tank.

6



Replace tank by lining the tank bottom with indentations on machine. Press down firmly on tank to secure in position.

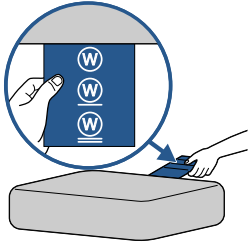
NOTE: Ensure that the cleaning solution and water are in the tank before use.

Pre-Treating

IMPORTANT: Check the manufacturer's tag before cleaning rugs and upholstery.

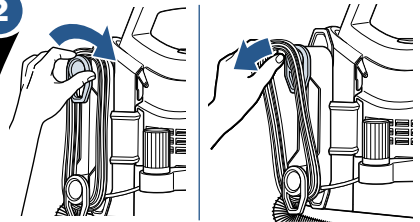
WHY PRETREAT? Cleaning effectiveness will be enhanced if you pre-treat heavily stained or highly soiled areas.

1



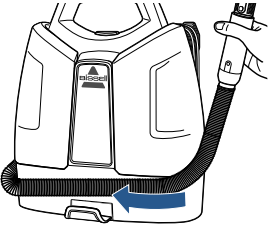
Check the manufacturer's tag before cleaning rugs and upholstery

2



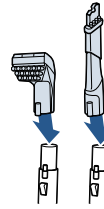
Twist the Quick Release™ cord wrap clockwise to quickly unwrap power cord. Plug in unit and press power button beneath the handle to turn it ON.

3



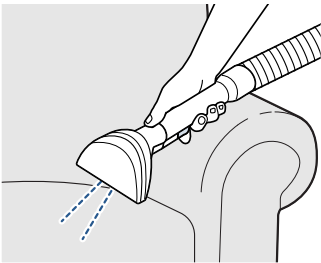
Release the flex hose from the hose grip bracket. Unwrap flex hose completely from around the unit.

4



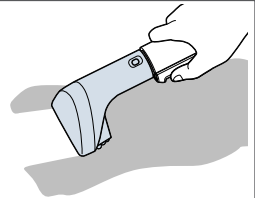
Select desired tool for spot cleaning. Insert tool on end of hose until it clicks into place.

5



Hold the 3" tough stain tool just above the carpet or upholstery to be cleaned. Press the trigger to mist solution over the soiled area.

6



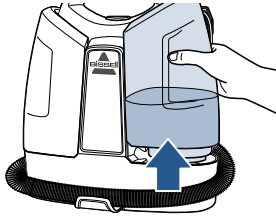
Let cleaning solution set for 5 minutes before cleaning. To lift the stain away, apply downward pressure on the tool and slowly pull it toward you. Then use "drying strokes" (by not pressing down trigger) to remove remaining moisture. Repeat as needed.

Empty Dirty Water Tank

WARNING

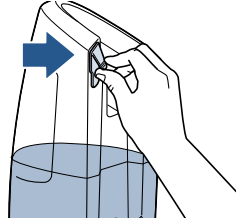
To reduce the risk of electric shock, turn power OFF and disconnect from electrical outlet before performing maintenance or troubleshooting.

1



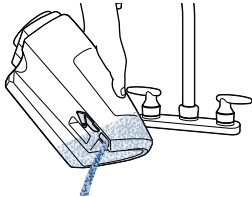
To remove the dirty water collection tank simply lift up on the tank from the base of the machine.

2



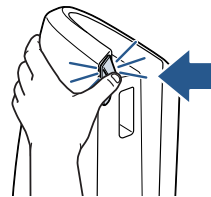
Pull tab to remove plug from tank.

3



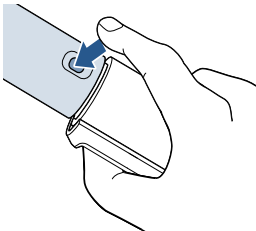
Carefully empty dirty water tank, as some water may potentially enter/drain from center float stack.

4



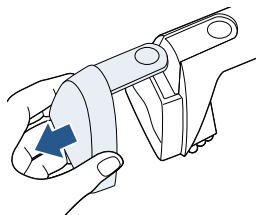
Close the tank plug and return tank to unit. Ensure tank is secure before use.

5



To disconnect the cleaning tools from the hose grip, push down on the button and pull straight off. (Do NOT twist tool to remove it.)

6



The front of the tough stain tool can be removed for easy cleaning. Press the button on top of the tool and slide its front off the tool base. Rinse under water and return to tool.

NOTE: Store unit in protected, dry area at room temperature (40-110° F; 4-43° C).

NOTICE

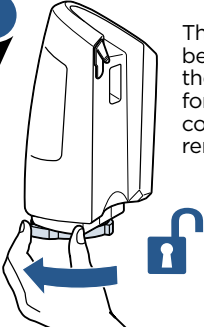
To reduce the risk of a leaking condition, do not store unit where freezing may occur. Damage to internal components may result.

Clean the Float Stack

WARNING

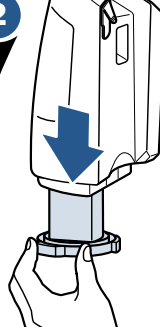
To reduce the risk electric shock, turn power OFF and disconnect from electrical outlet before performing maintenance or troubleshooting.

1



The float stack can be removed from the dirty water tank for cleaning. Turn it counterclockwise to remove it.

2



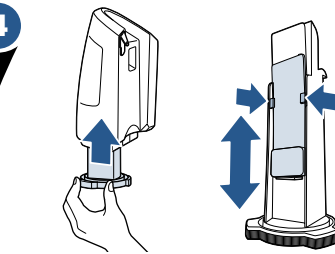
Remove the float stack from the dirty water tank.

3



Rinse with water until all debris is removed and let air dry.

4



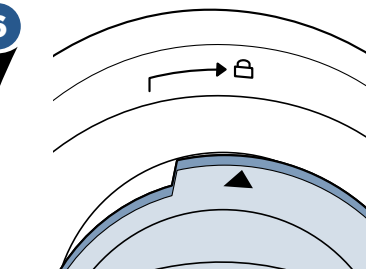
Return the float stack to the dirty tank. Ensure float is installed before returning the float stack to the dirty tank.

5



Turn the float stack clockwise to lock.

6



Ensure the arrow on the float stack lines up with the lock icon.

Thermal Protector

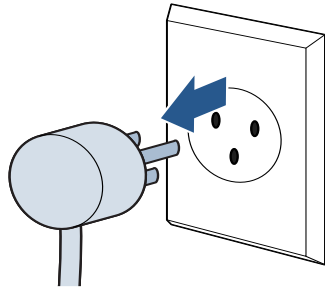
An internal thermal protector has been designed into your carpet cleaner to protect it from overheating. When the thermal protector activates, the suction motor will stop operating. If this happens proceed as follows:

1



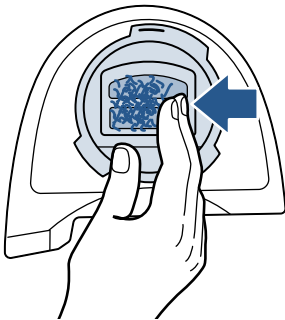
Turn the cleaner OFF.

2



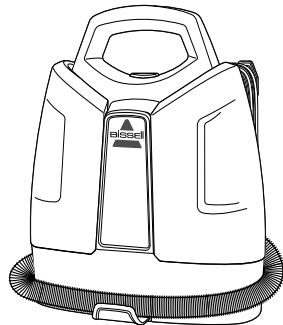
Unplug cleaner from the electrical outlet.

3



Check the end of the hose and tool for blockages and remove if necessary. Check the float stack for clogs and remove debris.

4



Let the motor cool for approximately 30 minutes. The thermal protector will automatically reset and cleaning may continue once plugged back in.

NOTE: If the thermal protector continues to activate after following the above steps, your cleaner may need servicing. Call BISSELL Consumer Care or visit the website.

Troubleshooting

WARNING

To reduce the risk of electric shock, turn power switch off and disconnect from electrical outlet before performing maintenance or troubleshooting checks.

Problem	Possible causes	Remedies
Reduced spray or no spray	Spray nozzle clogged.	Clean spray nozzle using an unfolded paper clip.
	Clean water/solution tank empty.	Check/fill tank.
	Clean water/solution tank insert clogged.	Clean insert at bottom of clean water/solution tank.
	Pump needs priming.	Gently lift clean water/solution tank while depressing the spray trigger OR gently squeeze clean tank while depressing spray trigger.
	Clean tank not fully seated.	Remove and reinstall clean tank.
Spot cleaner won't pick up cleaning solution	Poor upholstery/carpet tool position.	Reposition upholstery/carpet tool on surface, follow recommended cleaning procedures.
	Dirty water tank is full.	Empty dirty water tank.
	Excess solution in flex hose.	Lift tool and point upwards to allow water in hose to flow into the dirty water tank.
	Incorrect cleaning formula.	Use BISSELL 2X Portable Machine formulas only.
	Dirty tank is improperly seated onto base.	Remove dirty tank and reseal onto unit.
	Dirty tank plug is unplugged.	Push in dirty tank plug until properly sealed.
Dirty Water Tank Leaking	Duckbill valve is dirty.	Clean the duckbill valve that is located at the bottom of the dirty water tank. Once cleaned, make sure it is placed securely back in place.
	Float stack not fully locked on dirty tank.	Remove float stack and twist until arrow is aligned with lock symbol on dirty tank pg. 12.
	Dirty tank not properly seated onto machine.	Remove and reseal onto unit.

Consumer Guarantee

This Guarantee only applies outside of the USA and Canada. It is provided by BISSELL International Trading Company BV ("BISSELL").

This Guarantee is provided by BISSELL. It gives you specific rights. It is offered as an additional benefit to your rights under law. You also have other rights under law which may vary from country to country. You can find out about your legal rights and remedies by contacting your local consumer advice service. Nothing in this Guarantee will replace or lessen any of your legal rights or remedies. If you need additional instruction regarding this Guarantee or have questions regarding what it may cover, please contact BISSELL Consumer Care or contact your local distributor.

This Guarantee is given to the original purchaser of the product from new and is not transferable. You must be able to evidence the date of purchase in order to claim under this Guarantee.

Limited 2 Year Guarantee (from the date of purchase by original purchaser)

Subject to the *EXCEPTIONS AND EXCLUSIONS identified below, BISSELL will repair or replace (with new, refurbished, lightly used, or remanufactured components or products), at BISSELL's option, free of charge, any defective or malfunctioning part or product.

BISSELL recommends that the original packaging and evidence of the date of purchase be kept for the duration of the Guarantee period in case the need arises within the period to claim on the Guarantee. Keeping the original packaging will assist with any necessary re-packaging and transportation but is not a condition of the Guarantee.

If your product is replaced by BISSELL under this Guarantee, the new item will benefit from the remainder of the term of this Guarantee (calculated from the date of the original purchase). The period of this Guarantee shall not be extended whether or not your product is repaired or replaced.

*EXCEPTIONS AND EXCLUSIONS FROM THE TERMS OF THE GUARANTEE

This Guarantee applies to products used for personal domestic use and not commercial or hire purposes. Consumable components such as filters, belts and mop pads, which must be replaced or serviced by the user from time to time, are not covered by this Guarantee.

This Guarantee does not apply to any defect arising from fair wear and tear. Damage or malfunction caused by the user or any third party whether as a result of accident, negligence, abuse, neglect, or any other use not in accordance with the User Guide is not covered by this Guarantee.

An unauthorised repair (or attempted repair) may void this Guarantee whether or not damage has been caused by that repair/attempt.

Removing or tampering with the Product Rating Label on the product or rendering it illegible will void this Guarantee.

SAVE AS SET OUT BELOW BISSELL AND ITS DISTRIBUTORS ARE NOT LIABLE FOR ANY LOSS OR DAMAGE THAT IS NOT FORESEEABLE OR FOR INCIDENTAL OR CONSEQUENTIAL DAMAGES OF ANY NATURE ASSOCIATED WITH THE USE OF THIS PRODUCT INCLUDING WITHOUT LIMITATION LOSS OF PROFIT, LOSS OF BUSINESS, BUSINESS INTERRUPTION, LOSS OF OPPORTUNITY, DISTRESS, INCONVENIENCE OR DISAPPOINTMENT. SAVE AS SET OUT BELOW BISSELL'S LIABILITY WILL NOT EXCEED THE PURCHASE PRICE OF THE PRODUCT.

BISSELL DOES NOT EXCLUDE OR LIMIT IN ANY WAY ITS LIABILITY FOR (A) DEATH OR PERSONAL INJURY CAUSED BY OUR NEGLIGENCE OR THE NEGLIGENCE OF OUR EMPLOYEES, AGENTS OR SUBCONTRACTORS; (B) FRAUD OR FRAUDULENT MISREPRESENTATION; (C) OR FOR ANY OTHER MATTER WHICH CANNOT BE EXCLUDED OR LIMITED UNDER LAW.

Consumer Care

If your BISSELL product should require service or to claim under our limited guarantee, please contact us as follows:

Website:

www.BISSELLdirect.co.uk

Email:

uksupport@bissell.com

Telephone:

0344-888-6644

Visit the BISSELL website: www.BISSELLdirect.co.uk

When contacting BISSELL, have model number of cleaner available.

Please record your Model Number: _____ Please record your Purchase Date: _____

NOTE: Please keep your original sales receipt. It provides proof of the date of purchase in the event of a Guarantee claim. See Guarantee for details.



©2018 BISSELL Homecare, Inc
Grand Rapids, Michigan
All rights reserved. Printed in China
Part Number 161-3140 1/18
Visit our website at: www.BISSELLdirect.co.uk